

DECEMBER, 1951



Vol. II No. 3

PRICE 6^d

TABLE
TENNIS'
DIGEST

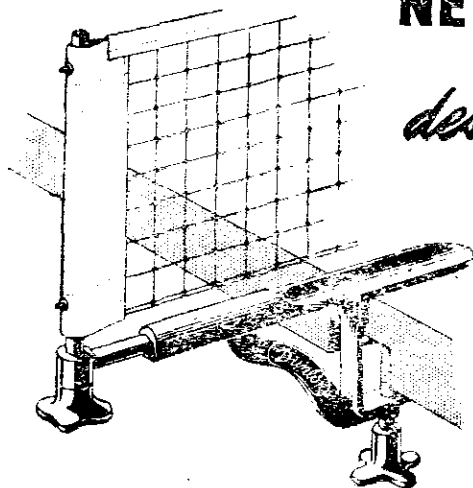
Official Magazine

OF THE

LIVERPOOL & DISTRICT TABLE TENNIS LEAGUE

The new 'CHAMPIONSHIP'

NET & POSTS



designed by

**Victor
Barna**

The new Victor Barna 'Championship' Net is $\frac{7}{8}$ " mesh as recommended by the International Table Tennis Federation. It is supported on springloaded Barna Posts to keep it always at the correct tension. The post assembly has a unique bayonet type slot for easy, instant assembly and dismantling. The tension can be relaxed when the net is not in use. Where the posts fit the table edge, they are lugged to prevent lateral movement, and are rigid to prevent leaning. The post assembly is just as efficient with ordinary nets as with the superb 'Championship' net.

Ask your sports dealer to show you the new Barna 'Championship' net and posts.

Dunlop

The Net: 10/- (incl. P.T.)

The Posts: 15/- per pair (incl. P.T.)

TABLE TENNIS EQUIPMENT

DUNLOP SPORTS CO. LTD., 19, 20 NEW BOND STREET, LONDON, W.1

15 77112

Table Tennis

Digest

All correspondence must be addressed to The Editor "Table Tennis Digest," 9 Podium Rd. L'pool 13

Published on the third Thursday of each month from October to March. Subscription for season 3s 9d. post free.

EDITORIAL BOARD:

Joint Editors: J. D. Pattison and J. D. Loughrey
D. M. Foulis W. Stamp A. Montgomery

COMMENT

IN our October issue the Fixture Secretary wrote an article which was full of important advice, and we make no apology in referring to it again. We strongly advise all Club Secretaries to read it carefully once more, for we feel certain that some of them have not yet fully realised the implications of several of the points mentioned.

One matter in particular needs some ventilation, we refer to the new rule which lays down that a player shall appear in a maximum of 26 league matches during the season. The records so far show that an alarming number of clubs have players who are going to complete their allotted number of matches some time before the end of March. It will save much heart-burning and trouble if Secretaries will take careful note of their player's appearances and when the occasion arises that a reserve is required, not call automatically each time on the same player from the lower team.

It should be noted, however, that women players may play in both the Ladies' and Open Divisions without 'penalty' that is to say, they can play theoretically 52 times in the season.

The other night at Balfour, we watched a most exciting and close match, full of good table tennis between the Liverpool and Bradford Ladies. The match had been advertised in the press, and yet apart from the players and officials there were less than ten others present. This is quite typical and has been so as long as we can remember, but without doubt if only League members knew what they were missing in the way of extremely good entertainment these matches would quickly have to be transferred to a much larger place than an ordinary Club room.

May we suggest that you go to one of these matches and at least form your own opinion as to amount of enjoyment or otherwise which you obtain from the evening. We feel certain that if this was done, in no time at all there would be regular attendance at these matches of well over the hundred mark.

LIVERPOOL'S
PREMIER CAR AUCTION

PARKFIELD MOTOR AUCTIONS, 1 AIGBURTH ROAD, LIVERPOOL 17
(Only 6 mins. from City Centre)

**SALE OF CARS, VANS, TRUCKS
EQUIPMENT & ACCESSORIES**
takes place every Thursday at 2 p.m.

The SALE is held under cover and
refreshments are available.

for further details write or phone

**PARKFIELD MOTOR AUCTIONS
AIGBURTH ROAD, LIVERPOOL 17**

LARK LANE 2204/2205. LANCASHIRE'S LEADING MOTOR ORGANISATION

ESTABLISHED OVER 50 YEARS

W. H. POBJOY & SON

LIMITED

***Prizes & Presentations
at Competitive Prices***

WATCHES, FOUNTAIN PENS, GENERAL FANCY
GOODS, CUTLERY, LEATHER GOODS, WEDDING
AND ENGAGEMENT RINGS, CLOCKS SUITABLE
FOR PRESENTATIONS.

7 & 9 Walton Rd. Liverpool 4

EVERTON VALLEY

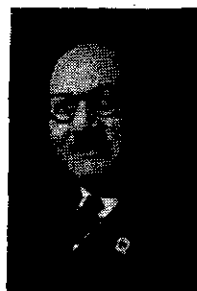
PHONE NORTH 1173

SPORTS AND WHIST PRIZES A SPECIALITY

From the Secretary's Desk.

ROWE TWINS HERE FOR MATCH AGAINST WALES

By W. STAMP.



WE were all disappointed that the Merseyside Open did not take place this season, with the finals at the Philharmonic Hall so that it is with pleasure we welcome the opportunity of staging the ENGLAND v. WALES International match on Saturday, January 19th, 1952, at this ideal venue.

We have had Welsh players at the Merseyside and know their fighting spirit, and they will be ably led by Walter Sweetland, who is playing extremely well this season, with wins over Brian Kennedy in the County match and Haguenuer in the French match. His only loss this season was against Amouretti in the same match.

The other two places will be filled from Gerald Chugg, John Davies or Michael Jones. Audrey Bates and Betty Grey will make up the team, the latter having wins this season over Margaret Fry and Diane Rowe.

Full Team Hope

I am hoping the English Selection Committee will send the full team that is going to Bombay to play in the Swaything and Corbillon cup matches and the World Championships, the final places have not been filled as we go to press but we are certain to have with us JOHNNY LEACH, the present Worlds Singles Champion, and the

ROWE twins, holders of the Worlds Doubles title.

Johnny is an old friend whom we have not seen for 14 months, but is always assured of a warm welcome, but Diane and Rosalind Rowe are paying us their first visit and I feel sure you will all want to give a real Liverpool welcome to two charming girls who have done so much to raise the prestige and status of the woman's game.

Make a Party.

Your club secretary has been sent a poster, together with a printed card on which he can enter the requirements of your club should you wish to make up a party, and I hope that every registered member will avail themselves of this opportunity of seeing high class table tennis under ideal conditions.

Tickets and booking plans are also at Jack Sharp Ltd., White-chapel; Rushworth and Dreaper Islington, and the Philharmonic Hall. Boxes (to hold 6) 30/-; Platform 5/-; Stalls and Upper Stalls 3/6; Balcony 2/6 and 1/6. Private subscribers who find it inconvenient to get to the agencies can obtain their tickets by writing to me at 3 Farndale Close, sending P.O. and stamped addressed envelope.

**BOOK EARLY AND OBTAIN
THE BEST SEATS.**

Chatter in the Clubrooms

THERE has been a great display of club badges this season and the latest team to proudly appear wearing their own emblem are the Liverpool Y.M.C.A. The badge consists of the well-known Y.M.C.A. triangle with a silver Liver bird superimposed, a rather subtle and neat way to distinguishing them from the several other Y.M.C.A. sides in the League.

* * *

There would be some comment at Anfield or Goodison Park if the players—and the referee, of course—agreed to do away with the lines marking the penalty area simply because no whitewash was available. Yet the equivalent happened in the Rose Bowl tie at Balfour, when three doubles sets were played without the dividing line because there was no chalk.

* * *

Clubs who can use their room on only one night in the week often find they have difficulty in fixing up their re-arranged League matches when the cup-ties have interfered. Secretary Ellison of Elm Hall Drive, has encountered this problem recently, as two drawn cup-ties have left him wondering how to fit in postponed League matches.

* * *

Several people are asking who is the Cheshire Lines player who set a new fashion in dress with six inches of woollies showing below his short sleeves. Shades of Arthur Askey!

* * *

We can assure all members of the League that there is no truth in the current rumour that airmen at the R.A.F. station in West

Kirby have to “pass out” at table tennis as well as square-bashing. It only seems that way to their opponents.

* * *

Two knotty points on rules which have occurred during League matches this season. One, is the ball in play when it leaves the server's hand or after he attempts to make a strike? Answer:—As soon as it leaves his hand—See Rule 15.

Two, is the ball still in play when it goes above shaded lights? Answer:—Yes, but the ball must bounce on the top of the table on the right side to count for the last striker—See Rule 13. So hope it does when it happens to you.

* * *

Brilliant Play in Rose Bowl

There was only a handful of people present at Balfour Institute for the Rose Bowl tie with Bradford, but they were well rewarded for their visit with some brilliant play.

True our win could have been greater than 5-4, gained by Eileen Mansell and Bluey May winning the final doubles, but the Yorkshire players, particularly young Joan Bycroft, deserved every point they won.

Highlights of the tie were the singles clash between Eileen and Joan, which Eileen won after losing the first game, and, curiously enough, the doubles in which was seen some fine understanding by each pair. Details:—

Singles:—E. Mansell beat A. Taylor 21-16, 21-6; beat J. Bycroft 20-22, 21-19, 21-10. L. May lost to B. Clough 22-20, 13-21, 16-21; lost to J. Bycroft 18-21, 18-21. K. May beat A. Taylor 14-21, 21-10, 21-10; beat B. Clough 21-14, 20-22, 21-18.

Doubles:—E. Mansell and L. May lost to J. Bycroft and A. Taylor 21-18, 14-21, 18-21; L. and K. May lost to J. Bycroft and B. Clough 19-21, 21-18, 13-21; E. Mansell and K. May beat B. Clough and A. Taylor 21-18, 21-16

The Digest Wants your Help

THE Table Tennis Digest is facing a critical period to overcome which we are seeking the co-operation of all members of the League.

The Editorial Board feel that in its new form the Digest has reached a standard worthy of a League like ours and their aim is to maintain, or even exceed that standard.

Despite the fact that members' subscriptions were increased and that our income from advertising has risen by about 50 per cent, we are facing a heavy loss.

We on the Editorial Board will do all we can to cut that loss but we want the help of all members to increase our income

The number of private subscribers has dropped to nearly half and we feel that scores of you must know former members of the League who are still interested in table tennis and in the fortunes of their former team-mates.

These are the people we want you to contact. Show them a Digest, get them to sign up as regular subscribers by handing over 3/9 which you can forward to Mr. W. Stamp, the League Secretary, with their names and addresses. This 3/9 includes the back issues for the current season.

That is not a hard job but the result can make all the difference to your magazine. Do your best and help to keep the Digest up to standard and at the same time help yourselves.

Your Leading
Suburban Store

FREEMANS
THE CITY STORE IN WAVERTREE ROAD

CLEMENT FREEMAN & SON LTD., WAVERTREE ROAD, LIVERPOOL 7

ACACIA BREAK THEIR "DUCK"

WITH only two months of the season's matches concluded the league table seems to be forming itself into two sections with Balfour unbeaten so far, still going great guns at the head of affairs but with Homecroft's young hopefuls hanging on grimly.

Perhaps the surprise of the season has been Balfour "A," now lying a handy third after hovering near the foot of the table for most of last season until jumping to safety by a late winning run.

W. Harris, Ken Gaulton, A. Miller and company may not be spectacular but they have shared in some solid, steady wins lately. What price the second string giving the Balfour "old firm" a shock? At least it will keep the reigning champions on their toes.

First Defeat

Rafters "A" are not far behind, though Ted Rumjahn's first defeat, accomplished at 18 in the third by Roy

Jones, cost the Liverpool team a point in their match at Wallasey.

They received a further blow to any hopes of championship they may have entertained when they lost to Balfour "A," their second defeat in successive weeks.

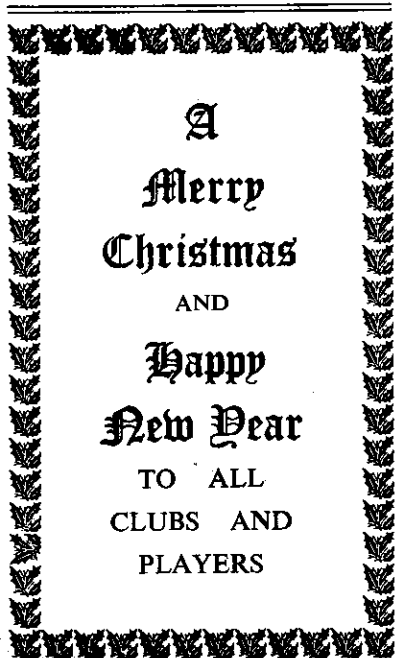
In the lower half of the table it looks like African Oil Mills and Anfield leading the way and perhaps "shaking" a few top half teams before long. "Just wait till Bill (Pierce) comes back" is the current cry at the Oil Mills. though they are doing quite well as it is with Cliff Bell at No. 3 pounding them down for well-earned victories lately,

Incidentally, I heard that Bill Pierce will arrive home next month and will be demobilised in February. At the beginning of the month he flew with his squadron to North Africa to play in a rugby match. I only hope that his apparent keenness for the handling code does not mean a loss of interest in table tennis.

Birkenhead Y.M.C.A., in spite of the added strength of G. Newey, remain still with a solitary point, and Acacia just seemed as if they could not get on the points board at all, although W. Rowan has won eight out of twelve sets, until they met Y.M.C.A. They broke their duck and lifted themselves from bottom position.

Few but a very select number of the "old guard" are available every match and even then often have "off" days when big hits become hopeful pokes, but somehow we dislike to forgo our usual sets with our friendly "enemies" from other clubs, whatever the cause.

Our older players hoped for the rise of several young stars this season, but so far in vain, mainly, it seems, though Homecroft's G. Hall and W. Stredder have improved tremendously as many, including Albert Montgomery and Abe Linforth of Rafters "A," know already. Though not an original active supporter of the new order of match play, I must confess that it seems to have given a spur to the middle of the team players and raised the status of captaincy from being a necessary evil to an art in itself.



Bill Jones Keeps It Up

THE season's League matches are nearly halfway through as I write these notes, and the position at both ends of the table will add bite and zest to the second half. Only I.C.I., Anfield "A" and Oakhill "A" appear safely placed in the middle of the table and they are just the teams to upset the promotion hopes of others.

Balfour "B" are sailing calmly along, having dropped only one point to date. Their future berth in Division 1 seems reasonably assured, but a few of us still fondle hopes that we may unsettle them before they reach that august position.

So close is the race, however, that I'm not sticking my neck out by daring to prophesy who will be the leading teams, especially as winter's ills no doubt will wreck their usual casualities. It seems probable, therefore, that those teams with strong reserve strength and nursed by Dame Fortune will fill the top two places.

At the wrong end of the table are St. Michael's, Wallasey Y.M.C.A. Jnrs. and Birkenhead Y.M.C.A. "A," who have all lost some regular last season players and have not yet managed to fill their ranks.

Impressive Record

The best individual record to date belongs to W. Jones (Balfour "B"), who has played in every match and has still to taste defeat. I understand that in view of his excellent form he has been moved up to No. 4 for the leaders. Congratulations Bill.

His 100 per cent record looks even more impressive when one considers that, at the time of writing, only three others, Gordon Exell, Bob Renshall and myself, have records of 75 per cent or over. Some others, including Vaughan Hoylake (Y.M.C.A.), A. D. Smith (Livex), Sayer and Gill (Balfour "B"), (Harris and Brownlee (Bootle Y.M.C.A.) and Young (Bohemians) are not far behind and a double victory in their next outing would pull them up to about the 75 per cent mark.

On December 3rd, Oakhill "A," playing at home, beat Birkenhead Y.M.C.A. "A" by 10 sets to nil but although thoroughly deserving their victory, it is only fair to point out that seven of the matches went to three games, and that four of these were won with a score of 21-17 or closer in the final game.

J. Grant (Oakhill No. 2), by virtue of a strong forehand attack, won both his sets convincingly in straight games, but R. Hudson on this evening seemed to me to be a little too eager to wade in and eventually had to fight hard to win his two sets against Clewett and Crowder

Birkenhead's tail, Edwards and Cartwright, played quite well but were not strong enough for their more experienced opponents, and so the Birkenhead team travelled home empty-handed, but not disheartened. Jim Clewett told me I could quote him as saying, "we'll be finishing up at the top of the table."

And so say all of us !

The Sports Specialist

TABLE TENNIS EQUIPMENT A SPECIALITY
Championship Tables, Bats, Balls, Nets, Shoes and Clothing.
All makes of named Bats and Tables supplied.

JACK SHARP

LIMITED

Telephone:

ROYAL 4793/4

VISIT OUR SHOWROOMS . . .

36-38 Whitechapel : LIVERPOOL 1

RAILWAYMEN CANNOT RELAX

SURELY this season's Third Division is providing the finest and most even pairings of all times, with no fewer than seven clubs struggling for supremacy. After seven league games only one point separated the second and the seventh team, but by now it is all change once again as fresh results roll in.

Cheshire Lines are still leading, but, although still unbeaten, gone is their 100 per cent record. They will not relinquish their position without a fight but they dare not slip even once.

It is said that home conditions suit the Railwaymen. They have played a higher proportion of home matches, but at least they have taken full advantage of this and fully deserve their points in hand.

Closest challengers are Kingsway and Wavertree Community. You will not be surprised about Kingsway. Personally I rather fancy they will be in at the

D. M. SINGER SPORTS OUTFITTER

FOR ALL TABLE
TENNIS EQUIPMENT
FISHING RODS
AND TACKLE
TENNIS, CRICKET
HOCKEY, FOOTBALL
B A D M I N T O N

All Kinds of
INDOOR GAMES
ICE SKATES & BOOTS

**RESTRINGING
& REPAIRS
QUICK
SERVICE**

D. M. SINGER
12 Exchange St. East, LIVERPOOL 2

Tel. CENtral 1987. 3 mins. from Exchange Stn.

kill for they strike me as the most ~~forceful~~ and balanced team of all.

Wavertree, I understand, have made a recent strengthening signing but we will reserve judgment on them until we see them in action. Obviously they are a force with which to be reckoned.

Do not think, however, that the seven top clubs are to decide among themselves the distribution of honours. Such clubs as Balfour and the Police are quite capable of having a say, and have indeed helped themselves to an odd point or so at the expense of the seven. Indeed it is more than likely that these points will in fact decide the final issue.

Loss of a key-man for but one game may also influence the final placings, and there will be many fingers kept crossed if we run into another "flu epidemic."

Visiting Burlington we find another team whose motto is "No place like home." Our only north-end club, they have dropped only one point on their own table and are among those battling seven.

Last season's North Region champions they have strengthened themselves with the addition of J. Lovelady, from Waterloo Park, and W. Kinrade, from Bath Street. The former, serving in the R.A.F., is enjoying plenty of table tennis and manages to see that the services do not interfere with his Liverpool League arrangements. Kinrade is a master of facial contortions when playing and has added strength to the tail.

Regal sentinels

Combine these two with M. J. Morrison, left-handed No. 1, with the finest counter attack in the division, and the steady R. Musker and R. Bird and we have a very useful combination.

Their H.Q. are not quite what is expected after first sight of Burlington House, with its regal sentinels staring stonily at all comers. The table tennis den, hidden away upstairs, will not suit those lovers of the wide open spaces, but with its sliding door and its bright curtains it is very cosy and homely.

Y.M.C.A. Win Opens Table

SO Thorndale have been beaten, and although only by six sets to four it has made the division more interesting. Now their conquerors, Liverpool Y.M.C.A., Waterloo Dock and Osterley join them in forming a group at the head of the table, while Port Sunlight and Rafters "B" form the second group, and the others jostle for places in the lower half of the table.

In my first article, I spoke of the Y.M.C.A. having been coached during the close season, and now it is bearing fruit. In their match with Thorndale, they were the better team. Not only are they playing good table tennis, and fully deserved their victory, but they play as a team and dress as a team, a fact which, I feel, makes all the difference for in an unconscious way, it seems to inspire confidence.

Now that a standard of dress is required by the rules of the League, it is good to come across a team as the Y.M., so other teams take note.

Tough Cup-tie

In the Readman Cup, the Y.M.C.A. have reached the fourth round by beating Rafters "B" in the third round, after a replay, but the luck of the draw is not with them, as they will have to do extremely well to beat Balfour "A" at the Institute.

In the Rafters tie, it seemed strange that the draw should have been at Mount Pleasant, and an 8-2 victory away from home. Rafters, like their

senior teams, are fighters all the way, and are composed of a mixture of experience and youth, which makes a good combination in any game.

The other Fourth Division side to reach the fourth round of the Cup, is Thorndale, who beat Technical Students 8 sets to 2, at the first time of asking in the last round, but here again, they will need to pull something out of the bag to vanquish Homecroft, who they meet in round 4, although they will have home advantage.

Looking through score cards can become an interesting pastime, not only from a statistical point of view, but as a source of comparison. It is found that, on the average, three or four sets are decided by a third game whatever the final score of a match.

Not so easy

However, I noticed that early in the season when Osterley beat Rafters "B" by 6 sets to 4—presumably a close match—only two sets were decided by a third game. On the other hand, Waterloo Dock appear to have soundly beaten Wallasey Juniors "A" by 9 sets to 1 a couple of weeks ago, but in this match, every set, apart from the Dock's No. 1, was decided by a third game.

Taking these eight sets apart, it is found that the average score of a game was between 21-18 and 21-19 to either side's players, so it is obvious the final score does not reflect a true picture of the match.

AFTER THE GAME . . .

MOORHOUSE'S LEMONADE

All Enquiries to—

**MOORHOUSE BROS., 4 BACK GILFORD ST.
ANField 248. LIVERPOOL, 6**

ADVICE TO HAROLD HOUSE

"TO win or not to win that is the question." Before us we have a team whose over-keenness for detail, in my opinion, effects the quality of their play.

Harold House are an excellent young team who have rejoined the league after a year's absence and who may well have been walking away with East Region 2. To a couple of their players, however, I say let the game be the thing and do not let the technical points take preference over the game itself; enjoy your match and let the rules be a basis for your enjoyment and not a barrier to be continuously crashing against.

In Ivor Chazen you have an excellent No. 1 and captain on whom to model your match discipline.

Although young in age (old man Chazen is 19), the team is not so young in experience. Two years ago they were represented in East Region 2 and last year won the L.B.A. championship.

Pay Dividends

Elackman's nice style will pay dividends soon, even if he is not hitting the jackpot at the moment. Vronofsky and Cohen are useful players to have around, but I think the latter would do well to forget his pen-holder grip at the end of the season.

Jack Silver completes the line up and Nora Markham is one of our few lady players.

Aigburth Methodists, who at the moment carry our wooden-spoon, are a team who could perhaps do with a little more of the will to win. Alan Topping leads the way and sets a splendid example, but I feel sure the Wilkinson brothers could win more games with a little extra concentration, particularly Stan, who certainly has the strokes.

Norman, incidentally, is stationed with the R.A.F., at West Kirby, where they seem to draw table tennis players like a magnet.

Jim Cashin and Barbara Royden complete the team. I think charming Barbara will find it tough going even at No. 5.

Progress in the Readman Cup has ceased for our division, the most meritorious exit being Cadwa's, who only lost 6-4 at Burlington and

inflicted on Marnar Morrison, their No. 1, his first double defeat of the season. The Hyde Cup, still sees us with a 50 per cent representation but the way is hard.

The league, I am afraid, is going the way I had hoped it would not go, with Linnet slowly but surely pulling away. Good luck to you Linnet, but a tight fight until the season's end would have been preferred.

I now stick my neck out and forecast the first three at the season's end—Linnet, Cadwa and English Electric. There are four teams who can prove me wrong. I say this before the Cadwa and English Electric game.

A suggestion has been put forward that we play the Fifth Wirral in ladies' and men's inter-division games home and away. What do you think?

To Cadwa again goes the prize of the month. After being 5-1 down at Linacre they recovered and forced a draw.

● SPORTS SPECIALISTS

● All E.T.T.A. Equipment

GRIFFIN & EVANS

(EVANS BRISTOWE LTD)

Telephone :

BIRkenhead 2918

44 GRANGE ROAD WEST
BIRKENHEAD

Morris Loses His Record

WITH a third of the season's programme over, the division is still fairly open. R.A.F.A. are still unbeaten, although they only managed to beat Co-op 6-4. During the past month Ted Morris lost his 100 per cent record to Dunks of West Kirby.

Birkenhead Y.M.C.A. have stepped into second place as the result of R.A.F., now third, losing to R.A.F.A. The Y.M.C.A. did well to hold the Airmen to a draw without the services of their captain, D. Dhenim.

Hoyleake Y.M. are steadily improving their position and are now in fourth place. What a wealth of promising young reserves they have. A notable example is 15 year old Ian Mackie in whom I foresee a second Roy Jones. Ian is worthy of a place in the League's coaching scheme.

Fine Win

Thorndale "A" have been climbing the table and are now worthy holders of fifth position. Their 6-4 win over Burrowdale was a fine performance. Derek Lind was in devastating form. He defeated Wilf Lonsdale and H. Sharpe each in two straight. G. C. Dixon playing as a reserve also won both his sets and it will be hard to hold a place in this team with Dixon knocking at the door.

Cosco have slightly improved their position and are now in sixth place, ready to step into the place of any team that falters, but Burrowdale have slipped from fourth to seventh place though Lonsdale, their skipper, will see to it that their lapse is only temporary. What a cheery, sociable lot these Burrowdale folk are. No team can fail to look forward to a match with them.

At number eight in the division Co-op have not recently been having things all their own way, but if I know Norman Cheshire and company they will soon be striving to regain lost ground.

On the other hand Claremont have further improved their position by a 6-4 win over St. Peter's. They are now ninth and I feel are at the

start of a growing challenge to teams higher up.

St. Peter's may be about to turn the corner. In the last three matches they have gained sixteen sets and three points against only eight sets in the previous five matches. In their match against Claremont, they were five sets down at the interval but fought back to win four out of the remaining sets.

Improvement has also been shown by Thingwall whose No.2 Bill Blundell, is a steady player with a good match record. Skipper Ken Peters is pleased with the progress made by Jean Barton since she has paid more attention to defence. Jean has lost only one set in the past three matches.

St. Joseph's should not take their lowly position too much to heart. They are still without a point and are no doubt suffering from first season nerves. Their players are little less skilful than more successful teams and what they lack will come with match play experience.

for Table Tennis

BUKTA T.T. SHIRTS

IN ALL SHADES

Shoes, Singlets and Clothing

BATS

Including BARN, JOHNNY LEACH
JACK CARRINGTON, HELEN ELLIOT
PEGGY FRANKS, HAYDON and many
OTHERS

All Makes of BALLS

including

BARN, HALEX, VILLA, METEOR

BAT COVERS

Table Nets and Equipment

PHONE ROYAL 8596

F. CUTTS & SONS

COMPLETE SPORTS OUTFITTERS

2 COLQUITT ST., LIVERPOOL 1

LEAGUE

up to Week Ending

First Division

	P.	W.	L.	D.	F.	A.	P.
Balfour	10	9	0	1	83	17	19
Homecroft	10	8	1	1	69	31	17
Balfour "A"	10	7	1	2	60	40	16
Rafters "A"	10	5	2	3	64	36	13
Oakhill	10	5	3	2	51	49	12
Rafters	10	4	3	3	59	41	11
African Oil	10	4	6	0	44	56	8
Anfield	10	3	5	2	43	57	8
15th Crosby	10	4	6	0	36	64	8
Bibby's	10	2	8	0	37	63	4
Acacia	10	1	8	1	33	67	3
B'head Y.M.C.A.	10	0	9	1	21	79	1

Second Division

Balfour "B"	9	8	0	1	67	23	17
Bohemians	10	6	2	2	60	40	14
Homecroft "A"	10	7	3	0	60	40	14
H'lake Y.M.C.A.	10	6	3	1	58	42	13
Livex	9	6	2	1	57	33	13
I.C.I.	10	4	4	2	55	45	10
Bootle Y.M.C.A.	9	4	3	2	49	41	10
Anfield "A"	10	3	6	1	43	57	7
Wallasey Jnrs	10	3	7	0	40	60	6
Oakhill "A"	9	1	4	4	39	51	6
St. Michaels	10	1	7	2	33	67	4
B'head Y.M. "A"	10	1	9	0	19	81	2

Third Division

Cheshire Lines	9	7	0	2	64	26	16
Wavertree C.C.	9	6	1	2	59	31	14
Kingsway	9	5	1	3	60	30	13
Victoria Park	9	4	1	4	57	33	12
St. Joseph's (W.)	9	5	2	2	52	38	12
Lucern	9	4	2	3	55	35	11
Burlington	9	4	3	2	51	39	10
L.P.A.S.	9	3	4	2	41	49	8
Balfour "C"	9	2	4	3	41	49	7
Oakhill "B"	9	1	8	0	22	68	2
Westfield	9	1	8	0	20	70	2
Dunlop	9	0	8	1	18	72	1

Fourth Division

Thorndale	9	8	1	0	73	17	16
L'pool Y.M.C.A.	9	8	1	0	68	22	16
Waterloo Dock	9	7	1	1	54	36	15
Osterley	9	6	2	1	51	39	13
Port S'light O.B.	9	5	3	1	55	35	11
Rafters "B"	9	5	3	1	49	41	11
Bohemians "A"	9	3	5	1	40	50	7
Domestic Miss.	9	3	6	0	39	51	6
Aigburth	9	3	6	0	36	54	6
W'tree C.C. "A"	9	2	7	0	29	61	4
Holly Mount	9	1	7	1	34	56	3
W'sey Jnrs. "A"	9	0	9	0	12	78	0

Fifth Division (Liverpool)

	P.	W.	L.	D.	F.	A.	P.
Linnet	9	9	0	0	62	28	18
Cadwa	8	5	1	2	52	28	12
English Electric	8	5	1	2	52	28	12
Anfield "B"	9	4	2	3	51	39	11
Linacre	9	3	2	4	47	43	10
Harold House	9	4	4	1	47	43	9
Victoria P. "A"	8	3	2	3	43	37	9
Elm Hall Drive	7	4	3	0	37	33	8
L'pool Y.M. "A"	9	2	6	1	35	55	5
Bootle Y.M. "A"	9	1	6	2	31	59	4
Taxes	8	0	5	3	32	48	3
Aigburth Meths.	9	0	8	1	21	69	1

Fifth Division (Wirral)

R.A.F.A. (B'hd).	9	9	0	0	66	24	18
R.A.F. (W. K'by)	9	6	1	2	63	27	14
B'head Y.M. Jnrs.	9	6	1	2	58	32	14
H'lake Y.M. "A"	9	5	2	2	48	42	12
Cosco	9	5	4	0	51	39	10
Burrowdale	9	5	4	0	46	44	10
Thorndale "A"	9	4	4	1	45	45	9
B'head Co-op.	9	3	4	2	43	47	8
Claremount	9	3	5	1	42	48	7
Thingwall	9	1	7	1	31	59	3
St. Peters	9	1	7	1	26	64	3
St. J'ph's (W"A)	9	0	9	0	21	69	0

NORTH REGIONAL

Litherland	9	8	1	0	71	19	16
Bath Street	9	7	1	1	62	28	15
English Elec "A"	8	7	0	1	60	20	15
Burlington "A"	9	7	2	0	57	33	14
Lofters	9	5	3	1	50	40	11
W'loo Dock "A"	9	5	4	0	48	42	10
Brenka	8	4	3	1	48	32	9
Littlewoods	9	2	6	1	37	53	5
Waterloo Park	9	2	7	0	36	54	4
Warbreck Moor	9	1	7	1	20	70	3
C'lic Met. Club	9	1	7	1	19	71	3
Lofters "A"	9	0	8	1	22	68	1

STOP PR

Tickets for the ENGLAND v. WALES match will be available from the Club Secretary on Friday, January onwards.

This will be the last match our team will play and we therefore have the opportunity of giving them gain further laurels for English table tennis.

At a recent meeting of the Management Committee for infringements of the rules:—St. Josephs Centre, Rule 21; Woodchurch, Rule 20.

The Cheshire Open will not take place on a suitable venue has not been obtained. Further available.

Will Secretaries and Captains please post their so

These tables may not be reproduced, without the

E TABLES

Ending 15th December

WOMENS'—Division I.

	P.	W.	L.	D.	F.	A.	P.
Rafters	10	9	0	1	68	32	19
Balfour	10	8	0	2	75	25	18
Bibby's	10	7	2	1	73	27	15
Bootle C.D.	10	7	2	1	66	34	15
Oakhill	10	5	3	2	60	40	12
Anfield	10	4	6	0	40	60	8
Littlewoods	10	4	6	0	40	60	8
Aigburth	10	3	6	1	40	60	7
Homecroft	9	3	6	0	38	52	6
Cheshire Lines	9	2	7	0	34	56	4
Rafters "A"	10	1	8	1	28	72	3
Wavertree C.C.	10	0	7	3	28	72	3

WOMENS'—Division II.

Linnet	10	9	0	1	89	11	19
Bohemians	10	9	0	1	87	13	19
Beauclair	10	6	1	3	72	28	15
Leyfield	10	6	2	2	67	33	14
Brenka	10	6	3	1	59	41	13
Lucem	9	3	3	3	44	46	9
Osterly	10	3	5	2	38	62	8
English Electric	9	2	5	2	31	59	6
Littlewoods "A"	9	2	6	1	29	61	5
I.C.I.	10	2	7	1	26	74	5
Domestic Miss.	9	1	7	1	27	63	3
Port Sunlight	10	0	10	0	11	89	0

EAST REGIONAL.

Bohemians "B"	9	8	0	1	69	21	17
R.A.F.A. (L'pool)	8	7	0	1	70	10	15
African Oil "A"	9	7	2	0	65	25	14
Balfour "D"	9	6	2	1	60	30	13
Anfield "C"	9	5	2	2	52	38	12
Bohemians "C"	9	4	4	1	37	53	9
Vagabonds	9	2	6	1	32	58	5
Leyfield	8	1	4	3	31	49	5
Osterly "A"	9	2	7	0	36	54	4
Old Xaverians	9	1	6	2	30	60	4
R.A.F.M'ments	8	1	7	0	17	63	2
Anfield "D"	6	1	5	0	11	49	2

SOUTH REGIONAL I.

	P.	W.	L.	D.	F.	A.	P.
Tech. Students	8	8	0	0	65	15	16
St. Michaels "A"	9	6	1	2	62	28	14
Cadwa "A"	9	7	2	0	58	32	14
Livex "A"	9	6	2	1	58	32	13
Beauclair	8	5	1	2	52	28	12
Linnet "A"	9	4	5	0	42	48	8
Lucem "A"	8	3	4	1	43	37	7
V'toria Park "B"	8	3	4	1	41	39	7
Aigburth "A"	9	2	5	2	32	58	6
W'tree C.C. "B"	9	2	6	1	31	59	5
Ches. Lines "A"	9	1	8	0	26	64	2
Deaf Inst.	9	0	9	0	10	80	0

SOUTH REGIONAL II.

Panto	9	9	0	0	82	8	18
Lussac	9	9	0	0	77	13	18
Tech. Stud. "A"	9	7	1	1	64	26	15
R.A.F.A. (L) A	9	6	2	1	61	29	13
L'pool Y.M. "B"	9	5	4	0	57	33	10
Wavertree Lab.	9	4	4	1	42	48	9
Linnet "B"	9	3	5	1	38	52	7
Vauxhall Sports	9	2	5	2	31	59	6
Linnet "C"	8	1	5	2	20	60	4
Ches. Lines "B"	8	1	6	1	25	55	3
Leyfield "A"	9	1	8	0	17	73	2
Beauclair "A"	9	0	8	1	16	74	1

WEST REGIONAL I.

R.F. St. Anne's	9	9	0	0	77	13	18
Creep Inn	9	6	2	1	57	33	13
SS. Mary & Paul	9	5	1	3	56	34	13
Cosco "A"	9	5	3	1	57	33	11
Wallasey Motors	9	4	2	3	47	43	11
Prenton Meths.	9	4	3	2	44	46	10
Port Sunlight	9	4	4	1	45	45	9
Thorndale "B"	9	2	5	2	38	52	6
Creep Inn "A"	9	3	6	0	36	54	6
Borrowdale "B"	9	2	6	1	31	59	5
Claremont "A"	9	2	7	0	28	62	4
Borrowdale "A"	9	1	8	0	24	66	2

WEST REGIONAL II.

B'head Boys Cl.	9	8	1	0	65	25	16
H'lake Y.M. "B"	8	7	0	1	68	12	15
St. Anne's "A"	9	6	1	2	65	25	14
R.A.F.A. (B) 'A'	9	6	3	0	57	33	12
Y.W.C.A.	9	4	3	2	45	45	10
P. Sunlight "A"	9	4	3	2	44	46	10
B'head Co-op 'A'	9	4	4	1	46	44	9
Woodchurch	9	2	5	2	29	61	6
Thingwall "A"	8	2	5	1	35	45	5
St. John's	9	1	7	1	28	62	3
St. Anne's "B"	9	1	7	1	24	66	3
B'head Boys "A"	9	1	7	1	24	66	3

TOP PRESS

es match will be available at all agencies from the 1st

am will play in England before leaving for India and giving them all a warm send-off in their efforts to e tennis

ageme- Committee the following clubs were fined St. Josephs, Rule 22b; Wavertree Community e 20.

place on the date published (26th January) as a ed. Further particulars will be announced when

post their score cards the same evening of the match.

without the authority of the *Table Tennis Digest*.

Park Had That Little Extra

By J. H. C. Hughes.

THE clash between the Fifth Division leaders, Linnets, and their Third Division opponents in the third round of the Readman Cup, ended in a good win for the latter by 8-2.

Victoria Park fully deserved their success but were a little flattered by the score. The first game of the tie between J. Green and S. Barrett set the pattern of what was to follow. Green lost the first game 9-21 but fought back from 16-20 down in the second to take it at 25-23, only to lose the final game 14-21.

This happened on several occasions and although sometimes the Linnet players were guilty of silly shots after getting within sight of victory, it was more often that the visitors, with their greater experience, produced that little extra at the crucial moment.

Gap Widened

The result was that although the match always threatened to be a close one, the score, which was shown on Linnet's excellent scoreboard, continued to show Victoria Park widening the gap.

For the winners Barrett and E. Cameron were in good form. Barrett's consistent forehand attack won him many points despite the fact that he broke all rules regarding footwork.

Linnets' two successes were won by L. Mason and G. McSorley, both against D. Cameron, who did not appear to be able to recover from trying to combat the negative tactics of Mason, who seems to fill Benjamin Franklin's description of genius, inasmuch as his game is made up of 10 per cent inspiration and 90 per cent perspiration.

Not the least commendable part of the match was that both teams appeared in club colours, Linnet in light blue shirts and Victoria Park in (ahem) maroon.

Whoever meets Victoria Park in round four will find they are up against a team who fight for every point, while the Linnets will play worse and win.

PEN PERSONALITIES

Mrs. Rene Sturgeon.

SOME people thrive on hard work and it is obvious that Mrs. Rene Sturgeon falls into this category. Her work on behalf of the Aigburth Club and the recently-formed Linnet Club have made her one of the busiest secretaries in the League.

Looking after one or two teams can generally provide enough problem for any one person, but Mrs. Sturgeon takes five or six in her stride and performs her duties so well that cancellations and short sides are things that don't happen to her teams.

Mrs. Sturgeon could, in fact, well lay claim to being the model secretary, for she is always willing and anxious to help both her club and the League in any way she is able.

But even her table tennis secretarial work does not absorb all her energies for she finds time to help her husband in running a football team.

Mrs. Sturgeon is a table tennis player to be respected, more than useful at lawn tennis and formerly kept goal with distinction for Aigburth hockey club.

Mr. J. E. Neill.

There is no more outspoken critic on the Management Committee than Mr. Jack Neill, our North Region secretary, and his views are such that they command respect.

Mr. Neill first joined the Committee in 1935-36 and but for the fact that the war called his services elsewhere and so broke his continuity he would be one of the oldest members.

During the 1914-18 war he served with the Argyll and Sutherland Highlanders and in 1939 rejoined his old regiment only to be called back to civilian duties at the request of the railway authorities.

He joined the T.A. Supplementary Reserve and was seconded to the 15th Cadet Corps (Mersey Garrison) in 1944, to which he is still attached with the rank of captain.

Two years ago he again took up his old task as North Region secretary and has thrown his energies into raising its prestige, his ultimate aim being to restore it to its pre-war strength.

G. H. LEE & Co.
Sports Department

for All

TABLE TENNIS EQUIPMENT

BATS BY BARNA, BERGMAN POSTS, NETS, BAT COVERS
BEREGI, CASOFSKY, FRANKS SCORE PADS. VILLA, BARNA
CARRINGTON, HAYDON HALEX AND METEOR BALLS
LEACH, ROWE, ETC. CLUB MATCH & TOURNAMENT
TABLES AND TOPS IN STOCK

ROYal 7070

G. H. LEE & Co.
Basnett St. LIVERPOOL 1

SEE THE *STARS* BY YOUR
OWN FIRESIDE THIS YEAR

***Try* TELEVISION**

— BY —

STUART & DORFMAN(Electrical)**Ltd.**

168-170 West Derby Road

LIVERPOOL 6 *Tel. ANField 2101*

ONE HUNDRED SETS TO CHOOSE FROM

CASH OR EASY PAYMENTS

FREE TRIAL IN YOUR HOME WITHOUT OBLIGATION
TO PURCHASE

Needle Match Ended in Draw

A great deal is being written in the national magazine about dress for table tennis which should do the game a great service. I think that carelessness in this direction has been partly responsible for the game being considered the Cinderella of sport.

No doubt you will have often heard the remark, "oh, anything is good enough for table tennis," too often by players who would be the first to shriek at such an attitude towards lawn tennis or badminton.

I am against regimentation, but I do think that club colours and, as far as possible, uniformity of dress by a team, adds not only to their appearance but to their play.

Individualists

The failure of many teams in league matches and championships in my opinion, is that players play as individuals and not as team members. There are too many who selfishly wish to arrive just in time to play their own sets, dash off, are not a bit interested in encouraging their fellow members, and at the same time plan their own tactics. What is your opinion?

I cannot hope to recapture the "Cup Final" excitement and tense moments of the needle match between the Second Division leaders, Bohemians and Linnet, when the "House full" notice could have been displayed. It says much for both teams that they have such staunch supporters, who must have sighed with relief at the drawn result.

I think Linnet, who were the slightly better balanced side, rather failed to take advantage of this fact and were behind almost all through the match. Audrey Richards levelled for them at half-time, and it was left to Joyce Tippetts to win the vital game at the end against Mrs. G. Barton, and she didn't disappoint.

Joyce and Pat Alcock played confidently to win their four sets, but not before Pat had a very narrow escape in the second set against Moya Pattison in a match that never had a dull moment.

Outstanding for Bohemians was Pat Spranger whose game was well mixed and always full of surprises. She

accounted for Audrey Richards—steady defence coming to her rescue when she was down 10—1 in the third—and Doreen Alcock after three hard-fought games. Doreen also fell to the stone-wall defence of May Alcock, as did Elsie Palmer, who, although losing the first game easily, put up a game fight in the second and third.

One of the highlights of the match was the set between Moya and Elsie, which was always exciting before Moya won 21—17 in the third.

Always Interesting

One of the best games of counter-hitting I have seen was between Eileen Royal and D. Greensmith, which Eileen won, when Anfield visited Aigburth. Although the home team won 7—3 the match was never without interest. M. Hadden scored two convincing victories, as also did N. Wass. M. Cross played well for Anfield and was a little unlucky not to record a win.

Aigburth scores:—M. Hadden 2, E. Royal 1, N. Wass 2, W. Ramsey 1, G. Donnelly 1. Anfield:—N. Lamb 1, D. Greensmith 1, E. Gray 1.

Ita Howley has transferred from Balfour to play "leading lady" for Anfield, and will no doubt ably assist them to establish their right to stay in the first division.

Daisy Mezey, who has been promoted to third position for Beauclair, was absent when Lucem visited her club, and took a valuable point home with them. J. Preston, who is unfortunate not to have more wins to her credit as she has only been very narrowly beaten on many occasions, played well to beat both Stein Farrell and Andree Williams. A. Wright also won both her games against M. Tibbells and D. Bryant, and S. Bradley got the fifth for Lucem.

Pat Hughes (Brenka) has collected several scalps in her first season, and is a great asset to her club which is maintaining a good position.

It is amazing the number of points that are given away through careless serving, which this season seems to be more prevalent than ever, together with wild back-hand shots!